

# CREDCHROM HPLC COLUMN



**CREDENCE SCIENTIFIC**

# CREDCHROM HPLC COLUMN

Platform based on high throughput and high pure silica matrix. Designed for the whole range for analytical through development in normal and reversed phase.

Our extensive family of products offers a variety of particle sizes and column designs to meet all separation needs, including improved resolution, enhanced sensitivity, faster analysis and consistent performance.

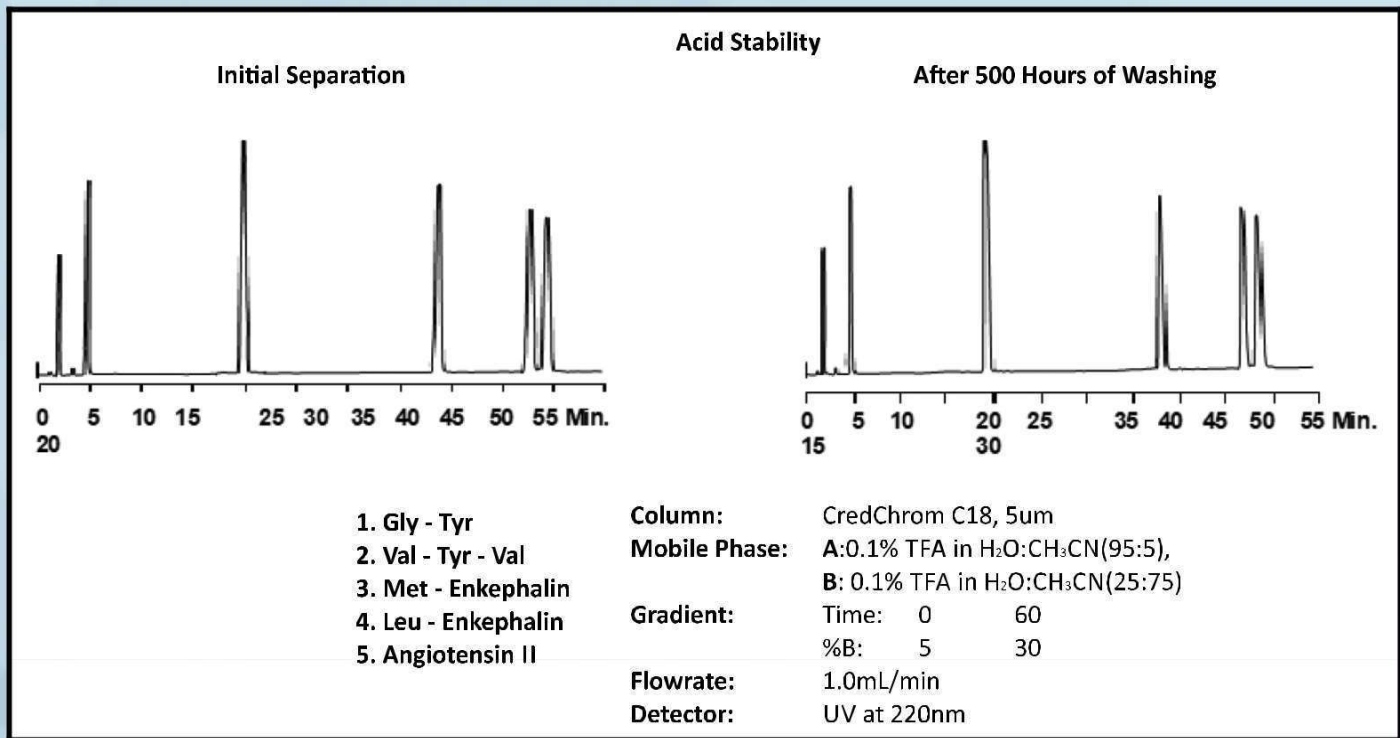
1. High pure and low metal content silica matrix
2. More carbon loading with increase in hydrophobicity
3. High mass loading and efficiency
4. Excellent Peak resolution and shape
5. Batch to Batch reproducibility

CredChrom Analytical Columns are available in 3  $\mu\text{m}$  and 5  $\mu\text{m}$  particle sizes across normal phase and reversed-phase column chemistries, C18, C8, Silica, Cyno and Phenyl with sure to meet your silica-based HPLC column requirements.



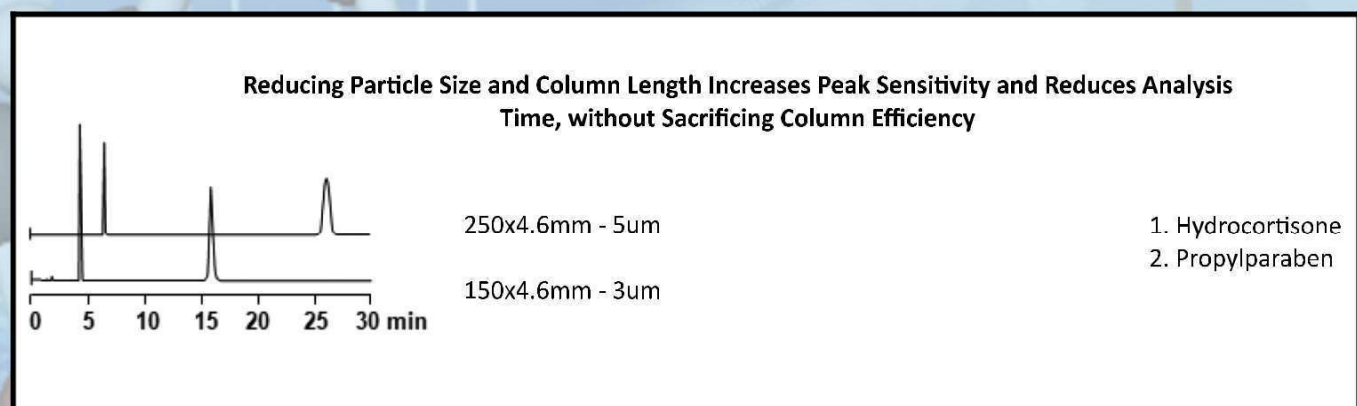
SL No	Phase	Base Matrix	Micron size	Pore size	Surface area	Carbon Loading	Working pH	End Capped
1	C18	Silica	3,5 $\mu\text{m}$	100A	340	19	2 to 8	YES
2	C8	Silica	3,5 $\mu\text{m}$	100A	340	12	2 to 8	YES

## CredChrom Acid Stability



A Credchrom C18 column was washed for 500 hours at 60 C with an acetonitrile and trifluoroacetic acid mobile phase. The separation of peptides showed no change in capacity selectivity or

## CredChrom C18 column Efficiency



# CredChrom All Phases Specification

SL No	Phase	Base Matrix	Micron Size	Pore Size	Surface Area	Carbon Loading	Working pH	End Capped
3	Amino	Silica	5,10um	100A	340 m2/g	3%	2pH to 7 pH	Yes
4	Phenyl	Silica	3,3.5, 5, 10um	190A	220 m2/g	7.40%	1.5 to 8 pH	Yes
5	Cyno	Silica	3, 3.5,5,10um	100A	450 m2/g	15%	2 to 7.5 pH	Yes
6	Silica	Silica	3,3.5, 5, 10um	100A	450 m2/g	0%	2 to 6 pH	Yes
7	C18AQ	Silica	3,5um	120A	360 m2/g	17%	2pH to 8pH	Yes
8	C18HC	Silica	3,3.5, 5, 10um	120A	440 m2/g	24%	2 to 10 pH	Yes

SL No	Phase	250x4.6mm-5um	250x4.0mm-5um	150x4.6mm-5um	100x4.6mm-5um	250x4.6mm-3um	150x4.6mm-3um	100x4.6mm-3um	300x3.9mm-5um
1	Amino	CC-5NH-25046	CC-5NH-25040	CC-5NH-15046	CC-5NH-10046				
2	Phenyl	CC-5PHY-25046	CC-5PHY-25040	CC-5PHY-15046	CC-5PHY-10046	CC-3PHY-25046	CC-3PHY-15046	CC-3PHY-10046	
3	Cyno	CC-5CN-25046	CC-5CN-25040	CC-5CN-15046	CC-5CN-10046	CC-3CN-25046	CC-3CN-15046	CC-3CN-10046	
4	Silica	CC-5SI-25046	CC-5SI-25040	CC-5SI-15046	CC-5SI-10046	CC-3SI-25046	CC-3SI-15046	CC-3SI-10046	CC-5SI-30039
5	C18AQ	CC-5C18AQ-25046	CC-5C18AQ-25040	CC-5C18AQ-15046	CC-5C18AQ-10046	CC-3C18AQ-25046	CC-3C18AQ-15046	CC-3C18AQ-10046	
6	C18HC	CC-5C18HC-25046	CC-5C18HC-25040	CC-5C18HC-15046	CC-5C18HC-10046	CC-3C18HC-25046	CC-3C18HC-15046	CC-3C18HC-10046	CC-5C18HC-30039